

# Animal Health

## Sheep and Beef

**Taking good care of  
your investment**











# Best practice for keeping your animals healthy

---

<b>Getting the most from a parasite plan</b>	<b>3</b>
<b>Boosting trace elements</b>	<b>4</b>
<b>Test to know</b>	<b>5</b>
<b>Strike against fly and lice</b>	<b>6</b>
<b>Seasonal activity</b>	<b>8</b>
<b>Product catalogue</b>	<b>11</b>
<b>Parasite control</b>	<b>12</b>
<b>Fly, lice and tick control</b>	<b>15</b>
<b>Applicator guns</b>	<b>17</b>
<b>Magnesium and other minerals</b>	<b>18</b>
<b>Trace elements</b>	<b>20</b>
<b>Flavouring agent</b>	<b>23</b>
<b>Facial eczema</b>	<b>23</b>
<b>Vitamins</b>	<b>24</b>
<b>Sheep and beef health planner</b>	<b>25</b>



**"Use combinations  
to slow drench  
resistance."**



**DUO<sup>®</sup> LOW DOSE- DOUBLE  
COMBINATION EFFECTIVE  
AGAINST ALL ROUNDWORMS  
AND LUNGWORM**

**TRIO<sup>®</sup> LOW DOSE- USE  
TRIPLE COMBINATIONS  
TO SLOW RESISTANCE**



# Getting the most from a parasite plan

**No matter how well fed your stock are, worms can eat into an animal's production – and your farm's profitability.**

The use of drenches has greatly reduced the impact of parasites, but with increasing levels of drench resistance, a multi-pronged plan of attack is necessary so you can maximise your investment in a good drench. A well planned parasite management programme is essential to minimise the impact of worms on animal performance and slow the development of drench-resistant worms.

## How do triple drenches make a difference?

If you're serious about slowing the development of drench resistant parasites, then your best option is to use triple and double combinations such as **Duo and Trio Low Dose** in your parasite management programme. Combining the actions of two - three drench actives in one

treatment lessens the chance for worms to survive, including those that are already resistant to one or two of the actives. Effective single actives will still have a place, but should only be used for one-off treatments or to target specific parasites e.g. moxidectin for barber's pole control.

## Develop your own parasite management plan

**1. Provide good nutrition** – well-fed animals will better manage worm infections. Higher pasture cover reduces worm intakes allowing for higher growth rates to be achieved. Well-conditioned animals require less drenching, saving costs and reducing selection for drench-resistant parasites.

**2. Reduce worm challenge** – cross graze with sheep and cattle, use adult stock to clean up pastures grazed by young stock and sow crops and new grasses.

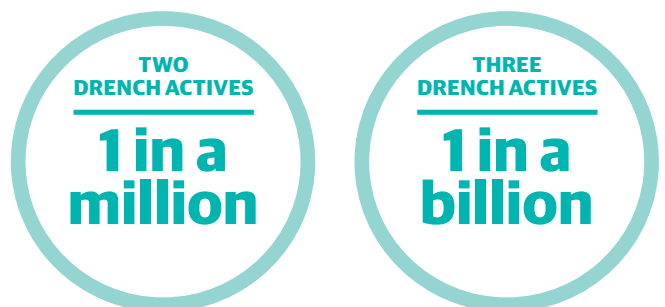
**3. Use the correct product** – use the correct drench active for the parasite you want to control e.g. moxidectin for barber's pole, praziquantel for tapeworm, clorsulon for liver fluke in cattle, levamisole for Cooperia in cattle.

**4. Use effective drenches** – use correct dose rates, calibrate the drench gun, dose to the heaviest weight.

**5. Slow the development of drench resistance** – use combination drenches, drench at 28 day intervals, drench only when necessary, avoid using long-acting products, leave part of the mob untreated, quarantine drench new stock onto farm, avoid routine drenching of adult animals.

**6. Monitor drench performance** – complete regular post-drench faecal egg counts to check the drench is working. Use faecal egg count reduction tests to confirm the drench status of your farm.

If you want help to develop a sustainable worm management plan talk to your Ravensdown Animal Health Area Manager.



**CHANCES OF A WORM SURVIVING?**



# Boosting trace elements

**There are eighteen trace elements (also known as micro elements) needed by animals in tiny amounts that are essential for life. In New Zealand pasture-based systems, we need to watch out for deficiencies in cobalt, copper, iodine, and selenium.**

## How do we know when there is a problem?

Research specific to New Zealand has been carried out over many years so we know the signs of deficiency, the dietary requirements, the reference ranges and effective treatments for these trace elements.

**How do we diagnose a deficiency?** Animal testing is the most conclusive way to diagnose a deficiency. However, animal symptoms, farm history, soil type and farm location can also identify the probability that a mineral deficiency will be present. Additional testing of herbage and supplementary feeds can help provide valuable information in diagnosing a trace element deficiency.

**Timing** is important as trace element uptake by pasture will vary at different times of the year. Generally actively-growing grass in the spring gives the best indication of what is available to the animal.

ELEMENT	ANIMAL HEALTH	SUPPLEMENTATION
<b>Cobalt (Co)</b>	Critically important for vitamin B12 production. Loss of appetite and poor growth.	Cobalt sulphate in spring fertiliser application, Stock Cobalt by drench, water, feed and Lift B12 injection.
<b>Copper (Cu)</b>	Ill-thrift, sway back, bone problems and poor reproduction.	Copper sulphate in autumn fertiliser application, Stock Copper by drench, water, feed and foliar (plant leaf) application.
<b>Iodine (I)</b>	Goitre (enlarged thyroid gland), still births, small weak offspring.	Stock iodine by drench, water, feed and foliar application. Injectable iodine is also used.
<b>Selenium (Se)</b>	Ill-thrift, white muscle disease, reduced production and fertility.	Selprill Double in fertiliser (lasts for 12 months), Stock Selenium by drench, water and feed and Lift B12 Selenised injection.

**Vita-Mineral Drench** will deliver iodine and selenium to prevent these deficiencies, while the vitamins will boost general health to further assist with improving performance especially at mating time.

For help with assessing testing and supplementation options for your farm, talk to your Ravensdown Animal Health Area Manager.



**VITA-MINERAL®: AN EXTRA BOOST WITH IODINE, SELENIUM AND VITAMINS**



# Test to know

**Having good information is critical when determining where to invest on-farm. Sound, scientific interpretation of collected data can lead to increased productivity for your farm.**

## **Faecal Testing**

**Faecal Egg Count (FEC)** - determine animal worm burdens, the need to drench or check how well a drench has worked. Composite (Mob) or Individual (FEC) options available.

**Larval Culture** - identify which roundworm species are causing problems in stock.

**Liver Fluke** - fluke egg count to confirm and/or monitor liver fluke infections in stock.

**Lungworm** - larval extraction to monitor stock for lungworm, especially cattle and deer.

## **Drench Resistance Testing**

**Faecal Egg Count Reduction Testing or FECRT** - a comprehensive test farmers can use to assess the effectiveness of drenches on their farm. It is recommended a FECRT is undertaken every 2-5 years, or when there

is suspicion a drench treatment has been ineffective, or when there is a positive drench check. Testing is available for one specific drench or a range of drench products. FECRT includes all FEC, larval cultures, equipment and reporting.

## **Facial Eczema Testing**

**Pasture Spore Counting** - determine the FE risk by measuring the number of spores on pastures.

**Faecal Spore Counting** - determine the FE risk by measuring the number of spores passing through animals. Faecal spore counting avoids the variability seen with pasture spore counting.

**Herbage Testing** - determine if the pasture can provide animals with the required amounts of dietary minerals, including important trace elements.

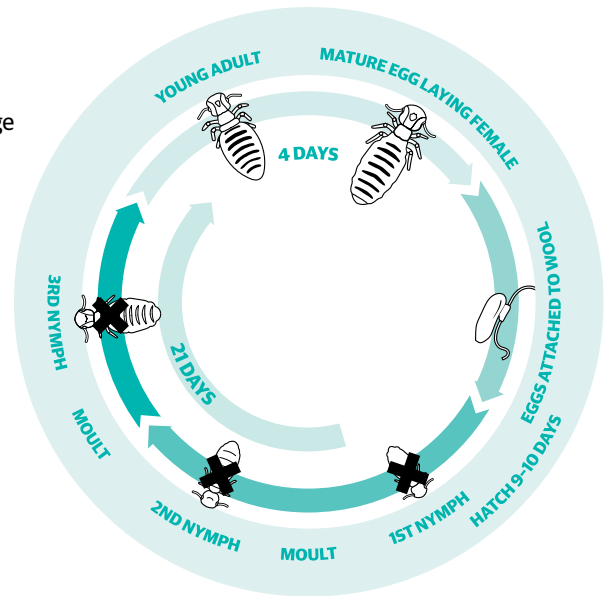
**Feed Quality Testing** - use the nutritional value of pasture and supplementary feeds to assist in determining nutritional requirements and feed budgeting.

**FOR MORE INFORMATION TALK TO US ABOUT RAVENSDOWN TESTING SERVICES - CALL OUR CUSTOMER CENTRE ON 0800 100 123**

  
**ravensdown**

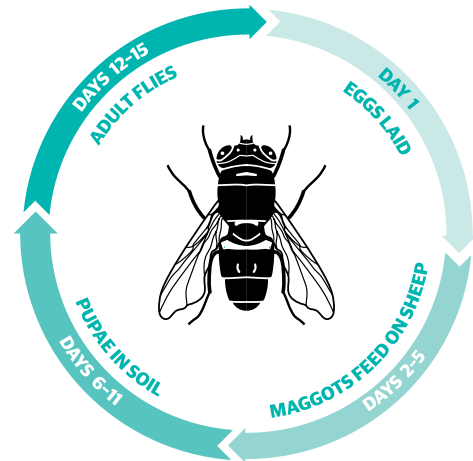


**LIFE CYCLE OF SHEEP BODY LICE**  
IGRs interfere at the 1st to 3rd nymph stage causing death



# Strike against fly and lice

Changing environmental conditions and more intensive farming has meant a real surge in fly strike. The best form of control is prevention – removing the food source and attractants through good management practices such as shearing, crutching and an effective worm drench program. Louse infestation continues to be a problem in the sheep industry leading to poor quality wool and pelt defects. Dipping is no longer compulsory, but it is still a regular feature of sheep farming and requires careful consideration.



## Best practice for prevention of flies & lice

### Plunge, Shower and Jetting Applications

**1. Always read the product label** before using, the label contains vital information on the use, storage, disposal and safety of the product.

**2. Understand how the chemical works.** Fly only or fly and lice control? Will it have immediate knock down or take time to be effective? Will treatment be short acting or persistent?

**3. Application is the key,** getting the correct chemical at the correct concentration, correctly applied for optimum results.

**4. Follow guidelines for** wool length. If wool is too long then the treatment may fail.

**5. Dip sheep 3-6 weeks** after shearing to achieve optimum protection. This allows time for cuts to heal and wool to grow, resulting in effective chemical application.

**6. Check animals** immediately after treatment to confirm full saturation has been achieved. Saturate dipping is the gold-standard fly and lice protection. The more chemical that gets to the skin surface, the more effective the treatment.

**7. Jetting devices** are primarily used for the application of dip for fly control. The success and length of protection is relative to the amount of dipwash applied to skin level.

For maximum fly control, use **Saturate Gold** dip concentrate for up to 12 weeks prevention of flystrike. Saturate Gold is Ravensdown's premier, unique, non-stripping fly and lice combination dip concentrate. **NOTE:** Saturate Gold is an Insect Growth Regulator, it will not control live strike.

### Pour-on Applications

**1. Ensure the product label is thoroughly read** as it has vital instructions on application.

**2. Understand how the chemical works.** Fly only or fly and lice control? Will it have immediate knock down or take time to be effective? Will treatment be short acting or persistent?

**3. Apply chemical at the best time,** which is immediately off-shears. The outpour of grease and lanolin immediately after shearing is critical to ensuring the chemical is moved around the body of the animal.

**4. Apply chemical correctly** to achieve an effective treatment. Pour-on products should be applied from the top of the head to the tail.

**Fleeceguard Pour On** is our unique combination fly and lice product. Fleeceguard Pour On is water based, the actives Diflubenzuron and Deltamethrin combine to give rapid knockdown of lice and persistent control for 5 months. Fleeceguard Pour On will also prevent flystrike for up to 14 weeks. Whatever your preferred method is for lice and fly control, contact your Ravensdown Animal Health Area Manager for further product information.



**“The more effective  
you are at getting  
your dip chemical to  
penetrate to skin level,  
the better it works.”**



**SATURATE® GOLD:  
COMBINATION PRODUCT FOR  
THE CONTROL OF LICE AND  
PREVENTION OF FLYSTRIKE**

**CYROMAZINE SPRAY ON™:  
FLYSTRIKE PREVENTION  
AND RESIDUAL PROTECTION  
FOR UP TO SIX WEEKS**



# Seasonal activity on a sheep and beef farm



## Spring

### SHEEP

#### Herbage testing

**Pre-lamb drench:** Trio Sheep; Trio Low Dose; Lift B<sub>12</sub>; Vita-Mineral

**Tailing/docking:** Cyromazine Spray On; Trio Low Dose; Trio Sheep; Combo Plus Tape; Lift B<sub>12</sub>

**Replacement animal parasite control:** Combo Low Dose; Trio Low Dose; Duo Low Dose; Trio Sheep; Abamectin Sheep; Abamectin Injection

### BEEF

**Precalving:** Abamectin Pour On; Abamectin Injection; Moximax Pour On; Animec Super Injection; Magnesium; Lift B<sub>12</sub>

**Drench R1's & R2's:** Abamectin Pour On; Abamectin Injection; Animec Super Injection; Trio Low Dose; Duo Low Dose; Combo Low Dose





## Summer

### SHEEP

**Fly and lice:** Saturate Gold; Fleeceguard; Cyromazine

**Barber's Pole:** Moximax Sheep; Closantel Plus

**Lamb weaning:** Lift B<sub>12</sub>; Combo Plus Tape; Combo Sheep; Trio Sheep; Trio Low Dose; Duo Low Dose

**Sheep facial eczema prevention:** Zinc Oxide Plus; Sporeguard

**Treatment of footrot:** Zinc Sulphate Mono/Hepta

### BEEF

**Cattle facial eczema prevention:** Sporeguard; Zinc Oxide Plus



## Autumn

### SHEEP

**Herbage/feed quality testing**

**Pre-tup management:** Trio Sheep; Lift B<sub>12</sub>; Stock Iodine; Vita Mineral; FEC testing; Trio Low Dose; Duo Low Dose

**Fly and lice prevention:** Fleeceguard; Cyromazine; Saturate Gold

**Barber's Pole:** Moximax Sheep; Closantel Plus

**Liver Fluke:** Closantel Plus

**Replacement animal parasite control:** Trio Sheep; Combo Sheep; Trio Low Dose; Duo Low Dose; Combo Low Dose; Abamectin Sheep

**Sheep facial eczema prevention:** Zinc Oxide Plus; Sporeguard

**Treatment of footrot:** Zinc Sulphate Mono/Hepta

### BEEF

**Calf weaning:** Combo Low Dose; Lift B<sub>12</sub>; Abamectin Pour On; Abamectin Injection; Moximax Pour On; Trio Low Dose; Duo Low Dose; Abamectin Sheep

**Liver fluke:** Animec Super Injection

**Cattle facial eczema prevention:** Sporeguard; Zinc Oxide Plus



## Winter

### SHEEP

**Ewe scanning (pregnancy test):** Stock Iodine; Lift B<sub>12</sub>; Vita-Mineral; monitor/test supplementary feed

**Sheep drench:** Trio Sheep; Trio Low Dose; Duo Low Dose

**Pre-lamb lice control:** Fleeceguard

**Pre-lamb ewe drenching:** Trio Sheep; Combo Sheep; Trio Low Dose; Duo Low Dose; Combo Low Dose; Vita Mineral; Lift B<sub>12</sub>; Stock Iodine

### BEEF

**Drenching and lice control:** Abamectin Pour On; Moximax Pour On; Abamectin Injection; Animec Super Injection; Deltamethrin Pour On







# Product catalogue



---

## Parasite control

- Cattle drench
- Sheep drench

---

## Fly, Lice and Tick Control

- Dip concentrate
- Pour-on
- Spray-on

---

## Supplements

- Magnesium
- Trace elements
- Vitamins

---

## Ordering is easy

**Order online at My Ravensdown or call our Customer Centre on 0800 100 123.**

**Then...Pick up from your local Ravensdown store**

- Next day delivery to store for other products for orders placed by 1pm

**or... Get your order delivered**

- On-farm delivery within 3-5 working days
- Customer blends may take up to 10-15 working days to be delivered.

  
**ravensdown**



## Moximax® Pour On

### Long-lasting parasite control

- Endectocide (ML) pour-on containing moxidectin
- Effective against all moxidectin-susceptible round worms (including inhibited *Ostertagia* larvae) and lice in cattle
- Effective against all moxidectin-susceptible round worms, including lung worm in deer
- In cattle prevents reinfection of *Dictyocaulus viviparus*, *Oesophagostomum radiatum*, and *Bunostomum phlebotomum* for 42 days, *Ostertagia Ostertagi* for 35 days, and *Haemonchus* spp and *Trichostrongylus axei* for 28 days
- In deer; prevents reinfection of *Dictyocaulus ekerti* (viviparus), *Ostertagia*-like spp, *Oesophagostomum venulosum* and *Chabertia ovina* for 42 days



**ACTIVE INGREDIENT:** 5g/L moxidectin

**DOSE RATE:** 1ml/10kg live-weight

**WITHHOLDING PERIODS:**

**Meat:** nil; **Milk:** nil

**PACK SIZES:** 5L backpack & 15L drum

Registered pursuant to the ACVM Act 1997, No A11326



**RAINFEST:** Can be applied when hide is wet, or if rain occurs shortly after application

## Abamectin™ Pour On

### Low dose internal and external parasite control

- Endectocide (ML) pour on anthelmintic containing abamectin
- Low dose formulation at 1ml/20kg live-weight
- Effective against all abamectin-susceptible roundworms (including inhibited *Ostertagia* larvae) and lungworm
- Highly effective against external parasites (biting and sucking lice)



**ACTIVE INGREDIENT:** 10g/L abamectin

**DOSE RATE:** 1ml/20kg live-weight

**WITHHOLDING PERIODS:**

**Meat:** 35 days; **Milk:** nil

**PACK SIZES:** 5L backpack & 20L drum

Registered pursuant to the ACVM Act 1997, No A9445.



## Abamectin™ Injection

### Registered for sheep and cattle

- Injectable endectocide (ML) anthelmintic with the potent active ingredient abamectin
- Effective against all abamectin-susceptible roundworms (including inhibited *Ostertagia* larvae) and lungworm
- Effective against sucking lice on cattle
- In cattle: up to 21 days persistent activity against *Dictyocaulus viviparus*; 14 days persistent activity against *Ostertagia* spp, *Cooperia* spp (ML susceptible) and *Trichostrongylus axei*; and 7 days persistent activity against *Oesophagostomum radiatum*
- Suitable for cattle over 100kg live-weight (and 16 weeks of age) and sheep over 20kg live-weight



**ACTIVE INGREDIENT:** 10g/L abamectin

**DOSE RATE:** 1ml/50kg live-weight

**WITHHOLDING PERIODS:**

**Cattle:** Meat (49 days); **Milk** (49 days)

**PACK SIZE:** 500ml injection pack

Registered pursuant to the ACVM Act 1997, No A9446.



## Animec Super Injection

### Controls liver fluke, roundworms and lice

- Injectable combination anthelmintic containing ivermectin and clorsulon
- Effective against all ivermectin-susceptible roundworms and lungworm, as well as sucking lice and mites
- Clorsulon is specifically effective against adult liver fluke
- Up to 21 days persistent activity against *Dictyocaulus viviparus* and *Oesophagostomum radiatum*; 14 days against *Ostertagia* spp (including inhibited immatures); and 7 days against ML-susceptible *Cooperia* spp



**ACTIVE INGREDIENTS:** 10g/L ivermectin (endectocide); 100g/L clorsulon (specific flukicide)

**DOSE RATE:** 1ml/50kg live-weight

**WITHHOLDING PERIODS:**

**Meat:** 28 days; **Milk:** 14 days

**PACK SIZE:** 500ml injection pack

Registered pursuant to the ACVM Act 1997, No A9938.







## Trio® Low Dose

### Registered triple combination drench

- Mineralised triple combination oral drench white/ML/clear
- Effective against roundworm and lungworm
- Ideal for treatment of *Cooperia* in young cattle
- Slows development of drench resistance



**ACTIVE INGREDIENTS:** 2g/L abamectin; 45.3g/L oxfendazole; 80g/L levamisole hydrochloride; 5g/L cobalt; 1g/L selenium  
**DOSE RATE:** 1ml/10kg live-weight  
**WITHHOLDING PERIODS:**  
**Meat:** 14 days; **Milk:** 35 days  
**PACK SIZES:** 5L backpack & 20L drum  
 Registered pursuant to the ACVM Act 1997, No A11505.



## Duo® Low Dose

### Registered combination drench

- Mineralised double combination (ML/clear) oral drench
- Effective against roundworm and lungworm
- Ideal for treatment of *Cooperia* in young cattle
- Slows development of drench resistance



**ACTIVE INGREDIENTS:** 2g/L abamectin; 80g/L levamisole hydrochloride; 5g/L cobalt; 1g/L selenium  
**DOSE RATE:** 1ml/10kg live-weight  
**WITHHOLDING PERIODS:**  
**Meat:** 14 days; **Milk:** 35 days  
**PACK SIZES:** 5L backpack & 20L drum  
 Registered pursuant to the ACVM Act 1997, No A11503.



## Combo™ Low Dose

### Registered combination drench

- Mineralised double combination (white and clear) oral drench
- Effective against all roundworms (including inhibited *Ostertagia* larvae and strains that are resistant to either the *Benzimidazole* family or *Levamisole*), lungworm, tapeworm and adult liver fluke
- Ideal for the treatment of *Cooperia* in young cattle



**ACTIVE INGREDIENTS:** 45.3g/L oxfendazole; 80g/L levamisole; 0.9g/L selenium; 0.2g/L cobalt; 2g/L copper; 0.9g/L iodine; 0.6g/L zinc  
**DOSE RATE:** 1ml/10kg live-weight  
**WITHHOLDING PERIODS:**  
**Meat:** 10 days; **Milk:** 35 days (cattle)  
**PACK SIZES:** 5L backpack & 20L drum  
 Registered pursuant to the ACVM Act 1997, No A10784.



## Trio® Sheep

### Use triple combinations to slow resistance

- Mineralised triple combination (white, clear and endectocide/ML) oral drench
- Ideal as part of a routine parasite control programme and for use as a quarantine drench
- Effective against all adult and immature roundworms (including strains with single or dual resistance to macrocyclic lactones, benzimidazoles, levamisole or closantel), lungworm, tapeworm, adult liver fluke, nasal bot and itch mite



**ACTIVE INGREDIENTS:** 1g/L abamectin; 25g/L albendazole; 40g/L levamisole; 0.5g/L selenium; 0.2g/L cobalt; 2.1g/L copper; 1g/L iodine; 0.6g/L zinc  
**WITHHOLDING PERIODS:**  
**Meat:** 14 days; **Milk:** 35 days  
**DOSE RATE:** 1ml/5kg live-weight  
**PACK SIZE:** 20L drum  
 Registered pursuant to the ACVM Act 1997, No A10662.



## Trio® Tape

### Use triple combinations to slow resistance

- Also contains praziquantel for specific tapeworm control
- Effective against all adult and immature roundworms (including strains with single or dual resistance to macrocyclic lactones, benzimidazoles, levamisole or closantel), lungworm and tapeworm



**ACTIVE INGREDIENTS:** 1g/L ivermectin; 22.7 g/L oxfendazole ; 40g/L levamisole; 18.8 g/L praziquantel; 0.5g/L selenium; 0.2g/L cobalt; 2.1g/L copper; 1g/L iodine; 0.6g/L zinc  
**WITHHOLDING PERIODS:**  
**Meat:** 14 days; **Milk:** 35 days  
**DOSE RATE:** 1ml/5kg live-weight  
**PACK SIZE:** 20L drum  
 Registered pursuant to the ACVM Act 1997, No A11504.





## Combo™ Sheep

### Use combinations to slow resistance

- Mineralised double combination (white and clear) oral drench
- Effective against all adult and immature roundworms (including strains that are resistant to either the benzimidazole family or levamisole), lungworm, tapeworm and adult liver fluke



**ACTIVE INGREDIENTS:** 24g/L albendazole; 37.5g/L levamisole; 0.5g/L selenium; 0.25g/L cobalt; 2.1g/L copper; 0.55g/L zinc  
**WITHHOLDING PERIODS:**  
**Meat:** 10 days; **Milk:** 10 days  
**DOSE RATE:** 1ml/5kg live-weight  
**PACK SIZE:** 20L drum

Registered pursuant to the ACVM Act 1997, No A9444.



## Combo™ Plus Tape

### The preferred choice for lambs from docking to weaning

- Mineralised double combination (white and clear) oral drench
- Also contains praziquantel for specific tapeworm control
- Effective against all adult and immature roundworms (including strains that are resistant to either the benzimidazole family or levamisole), lungworm, tapeworm and adult liver fluke



**ACTIVE INGREDIENTS:** 25g/L albendazole; 37.5g/L levamisole; 18.8g/L praziquantel; 0.5g/L selenium; 0.2g/L cobalt; 2g/L copper; 1g/L iodine; 0.6g/L zinc  
**DOSE RATE:** 1ml/5kg live-weight  
**WITHHOLDING PERIODS:**  
**Meat:** 10 days; **Milk:** 35 days  
**PACK SIZE:** 15L drum

Registered pursuant to the ACVM Act 1997, No A9789.



## Closantel Plus™

### A mineralised liquid combination drench specifically effective against barbers pole and liver fluke

- Up to 42 days persistent activity against barber's pole, and control of liver fluke e.g. pre-mating ewe drench
- Less selective for drench resistance than long acting moxidectin



**ACTIVE INGREDIENTS:** 1g/L abamectin; 50g/L closantel (as sodium salt) with 0.5g/L selenium & 2.2g/L cobalt  
**WITHHOLDING PERIODS:**  
**Meat:** 56 days; **Milk:** 56 days  
**DOSE RATE:** 1ml/5kg live-weight  
**PACK SIZE:** 20L drum

Registered pursuant to the ACVM Act 1997, No A11501.



## Moximax® Sheep

### Barber's Pole protection

- Mineralised moxidectin oral drench
- Effective against adult and immature roundworms (including strains resistant to benzimidazoles and levamisole) and lungworm
- 28 days persistent activity against *Haemonchus contortus* (Barber's Pole)
- 21 days persistent activity against *Ostertagia*



**ACTIVE INGREDIENTS:** 1g/L moxidectin; 0.5g/L selenium; 0.2g/L cobalt; 2g/L copper; 1g/L iodine; 0.6g/L zinc  
**WITHHOLDING PERIODS:**  
**Meat:** 7 days; **Milk:** 35 days  
**DOSE RATE:** 1ml/5kg live-weight  
**PACK SIZE:** 20L drum

Registered pursuant to the ACVM Act 1997, No A10724.



## Abamectin™ Sheep

### Contains potent, short-acting abamectin

- Mineralised endectocide (ML) oral drench
- Effective against all abamectin-susceptible adult and immature roundworms (including benzimidazole and levamisole resistant strains) and lungworm



**ACTIVE INGREDIENTS:** 1g/L abamectin; 0.5g/L selenium; 0.2g/L cobalt; 2.1g/L copper; 1g/L iodine; 0.6g/L zinc  
**DOSE RATE:** 1ml/5kg live-weight  
**WITHHOLDING PERIODS:**  
**Meat:** 14 days; **Milk:** 35 days  
**PACK SIZE:** 20L drum

Registered pursuant to the ACVM Act 1997, No A9447.







## Fleeceguard®

### Combination Pour On lice and fly control

- Unique water-based combination SP/IGR pour on for use off-shears and up to 6 weeks wool
- Rapid knockdown of lice and sustained control (including SP-resistant lice)
- Prevention of flystrike for up to 14 weeks
- Not a treatment for live flystrike



**ACTIVE INGREDIENTS:** 20 g/L diflubenzuron (IGR) and 10 g/L deltamethrin (SP)  
**DOSE RATE:** Use a standard drench gun with a T-bar nozzle. For more information see the product label.  
**Lice:** 18–39ml depending on live-weight. **Flystrike:** 11ml for docking; 33–51ml for body and crutch strike  
**WITHHOLDING PERIODS:**  
**Meat:** 7 days; **Milk:** 35 days; **Wool:** 2 months  
**PACK SIZES:** 5L backpack & 20L drum

Registered pursuant to the ACVM Act 1997, No 10577.



## Saturate® Gold

### The only combination IGR dip concentrate for fly and lice control

- Unique non-stripping combination IGR saturation dip concentrate
- Prevention of flystrike for up to 12 weeks via saturation dipping or jetting (including triflumuron and diflubenzuron resistant fly strains)
- Control of lice via saturation dipping (optimum time for treatment is 14–35 days post-shearing)
- Not a treatment for live flystrike



**ACTIVE INGREDIENTS:** 100g/L diflubenzuron and 250g/L cyromazine (both IGR)  
**DOSE RATE:** Apply by jetting or saturation dipping (as above), ensuring the sheep are fully wet  
**Lice:** Dilute 2L Saturate® Gold per 1,000 litres of dipwash  
**Flystrike:** Dilute 4L Saturate® Gold per 1,000 litres of dipwash  
**WITHHOLDING PERIODS:**  
**Meat:** 10 days; **Milk:** 35 days; **Wool:** 2 months  
**PACK SIZE:** 10L drum

Registered pursuant to the ACVM Act 1997, No A10950.



## Cyromazine Liquid™

### Up to 12 weeks protection against flystrike

- Non-stripping IGR saturation dip (for jetting, plunge or shower)
- For up to 12 week's protection against blowfly strike caused by common strike flies such as the Australian blowfly (*Lucilia cuprina*), including organophosphate resistant strains



**ACTIVE INGREDIENT:** 500g/L cyromazine  
**DOSE RATE:**  
**12 weeks protection:** Dilute 2ml Cyromazine Liquid per litre of water  
**6 weeks protection:** Dilute 1ml Cyromazine Liquid per litre of water. Apply by jetting or saturate dipping, ensuring the sheep is fully wet  
**WITHHOLDING PERIODS:**  
**Meat:** 7 days; **Milk:** 35 days; **Wool:** 2 months  
**PACK SIZE:** 5L drum

Registered pursuant to the ACVM Act 1997, No A11467.



# Fly, lice and tick control



## Cyromazine Spray On™

### Flystrike prevention as a convenient spray-on

- Ready to use spray-on for the protection of commonly struck areas of sheep
- For up to six week's protection against blowfly strike caused by common blow flies including the Australian blowfly (*Lucilia cuprina*), including organophosphate resistant strains



**ACTIVE INGREDIENT:** 60g/L cyromazine

**DOSE RATE:**

**Docking:** 5-10ml over the crutch, ensuring sufficient product is applied to the area to be protected

**For preventing poll strike:** At least 5ml Cyromazine Spray On around the poll and horns

**For the protection of all commonly struck areas:** 15-70ml depending on live weight. Use a standard drench gun with spray-on nozzle. For more information see the product label

**WITHHOLDING PERIODS:**

**Meat:** 7 days; **Milk:** 35 days; **Wool:** 2 months

**PACK SIZE:** 10L & 20L drum

Registered pursuant to the ACVM Act 1997, No A11468.



## Deltamethrin Pour On

### Pour-on fly and lice treatment

- Yellow, water-based synthetic pyrethroid insecticide
- Controls biting and sucking lice on cattle of any age
- Controls nuisance fly for a period of up to four weeks
- Maximum lice kills achieved up to six weeks after application but rapid relief of symptoms



**ACTIVE INGREDIENTS:** 15/L Deltamethrin

**DOSE RATE:** 1mL/20kg live-weight

**WITHHOLDING PERIODS:**

**Meat:** 28 days; **Milk:** nil

**PACK SIZES:** 5L

Registered pursuant to the ACVM Act 1997, No.A11646.



## Flumethrin Pour On

### Pour-on tick treatment

- Treats and controls all stages of tick lifecycle
- To aid in the control of tick-borne *Theileria* infection in cattle



**ACTIVE INGREDIENTS:** 10g/L flumethrin

**DOSE RATE:** 20ml up to 200kg live-weight; 30ml for 200-300kg live-weight; 40ml for 300-400kg live-weight; 50ml for over 400kg live-weight

**WITHHOLDING PERIODS:**

**Meat:** nil; **Milk:** nil

**PACK SIZES:** 5L backpack

Registered pursuant to the ACVM Act 1997. No. A11502





# Applicator guns

Designed to work with Ravensdown products.

Spare needles and backpacks are available on request by calling 0800 100 123.

## 8ml low-dose gun

- Designed especially for low dose drenching of young stock
- Comes with oral drenching (90mm) nozzle



## 15ml multi-use gun

- Comes with five nozzles: oral drenching (90mm and 100mm), pour-on, spray on and T-bar



## 18ml Fleeceguard® applicator

- Dedicated Fleeceguard gun and T-bar nozzle with an improved spring for easier use



## 30ml multi-use gun

- Comes with four nozzles: oral drenching (100mm), pour-on, spray on and T-bar



## 60ml multi-use gun

- Comes with oral drenching (150mm) and pour-on nozzles



## Injection gun

- Comes with two needles
- 2ml, 5ml and 10ml options



## Drench hook

- To connect to a standard drench gun for easy oral drenching of larger cattle



# Magnesium and other minerals



## Magnesium Oxide Fine

### 90% MgO

- High-quality 200-mesh dusting-grade magnesium oxide (MgO)
- Suitable for pasture dusting, pasture spraying or addition to supplementary feed
- Can also be used for oral drenching



**ACTIVE INGREDIENT:** 54% elemental magnesium (90% magnesium oxide)  
**DOSE RATE:** 30-70g per cow per day  
Actual rate depends on magnesium requirements and method of administration  
**PACK SIZE:** 25kg lined paper bag



## Magnesium Oxide Drenching

### Stable in suspension for easy drenching

- High-quality 325-mesh drenching-grade magnesium oxide (MgO) for daily oral drenching of dairy cows in the cow shed
- Uniform particle size means that it readily stays in suspension
- Can be used for pasture dusting or spraying, or addition to supplementary feed at higher rates



**ACTIVE INGREDIENT:** 54% elemental magnesium (90% magnesium oxide)  
**DOSE RATE:** 20-30g per cow per day  
depending on magnesium status  
**PACK SIZE:** 20kg lined polypropylene bag



## Magnesium Chloride Natural

### Water soluble magnesium supplement

- High-quality natural (unbleached) magnesium chloride ( $\text{MgCl}_2 \cdot 6\text{H}_2\text{O}$ ) that is highly soluble in water
- Suitable for addition to the drinking water or supplementary feed, or for daily oral drenching
- May contain a very small amount of harmless insoluble organic residue



**ACTIVE INGREDIENT:** 12% elemental magnesium  
**DOSE RATE:** 60-100g per cow per day  
Actual rate depends on magnesium requirements and method of administration  
**PACK SIZE:** 25kg lined polypropylene bag



## Magnesium Sulphate

### Water soluble magnesium supplement

- High-quality magnesium sulphate (Epsom Salts or  $\text{MgSO}_4 \cdot 7\text{H}_2\text{O}$ )
- Suitable for addition to the drinking water or supplementary feed, or for daily oral drenching



**ACTIVE INGREDIENT:** 10% elemental magnesium  
**DOSE RATE:** Cattle: 60-120g per cow per day; Actual rate depends on magnesium requirements and method of administration  
**PACK SIZE:** 25kg lined polypropylene bag





# Magnesium and other minerals



## Lime Flour

### Calcium supplement

- Ultra-fine high-quality calcium supplement ( $\text{CaCO}_3$ )
- Use for dairy cows after calving to aid in the prevention of milk fever
- Can be used by pasture dusting, daily oral drenching or addition to supplementary feed
- Suitable as a calcium supplement for adding to low calcium-feeds such as maize silage
- To avoid the risk of inducing milk fever, do not administer during the last 1-2 months of pregnancy unless on veterinary advice



#### ACTIVE INGREDIENT:

39% elemental calcium

**DOSE RATE:** 50-300g per cow per day depending on calcium requirements and method of administration

Alternatively add to maize silage at a rate of 60-120g/kg wet feed or 20-40g/kg dry feed

**PACK SIZE:** 25kg lined polypropylene bag



## Salt

### Sodium supplement

- Coarse grade 22 salt ( $\text{NaCl}$ ) suitable for oral drenching, licks, addition to drinking water or addition to supplementary feed
- Aids in the prevention and treatment of salt (sodium) deficiency
- Fine salt also available from some stores



#### ACTIVE INGREDIENT:

39% elemental sodium

**DOSE RATE:** 20-30g per cow per day Actual rate depends on sodium requirements and method of administration

**PACK SIZE:** 25kg polypropylene bag (also available in 1 tonne bulk bag from selected stores)



## Maize Triple Mix™

### Maize silage balancer

- Convenient ready-mixed calcium, magnesium and sodium supplement for addition to maize silage at the time of feeding out
- Aids in the prevention of hypocalcaemia (milk fever), hypomagnesaemia (grass staggers) and sodium deficiency
- Do not administer during the last 1-2 months of pregnancy unless on veterinary or nutritional advice to avoid the risk of inducing milk fever



**ACTIVE INGREDIENTS:** 21% elemental calcium (as lime flour); 14% elemental magnesium (as magnesium oxide); 8% elemental sodium (as salt)

**DOSE RATE:** 150g per cow per day

**PACK SIZE:** 25kg lined polypropylene bag



## Dicalcium Phosphate Powder

### Feed grade source of phosphorus, in a powder form, suitable for animal use

- Can be mixed into feed in a silage/mixer wagon, orally drenched, and dusted onto pasture. If adding to the hay/silage in the paddock, add it to water (+/- molasses) to make a slurry ensuring better distribution through the feed, and help to reduce wastage.
- Aids in the prevention of phosphorous deficiency when feeding forages or supplements low in phosphorous



**ACTIVE INGREDIENTS:** 20% elemental calcium, 18% elemental phosphorous from dicalcium phosphate dihydrate

**DOSE RATE:** 30-50g/cow/day as treatment in the instance of phosphorus deficiency

**PACK SIZES:** 25kg bag



## Starter Drench™

### Free flow formulation for easier drenching

- Convenient, ready-to-use, post-calving energy starter drench to provide energy and aid in the prevention of metabolic conditions (milk fever, grass staggers and ketosis)
- Flowable formulation means that it does not settle out or require stirring, making it easy to drench
- Do not administer pre-calving unless on veterinary advice, to avoid the risk of inducing milk fever



**ACTIVE INGREDIENTS:** 200g/L monopropylene glycol (MPG); 150g/L molasses; 100g/L soya oil; 12.5g/L magnesium (as magnesium oxide); 60g/L calcium (as precipitated calcium carbonate)

**DOSE RATE:** 1L per cow as soon as practical after calving; additional doses of ½ -1L for up to four days may be given

**PACK SIZES:** 20L and 200L drums



# Trace elements



## Dairy Cow Minerals™

### Proven trace elements – giving you the essentials

- Free-flow water-soluble multi-mineral trace element mix
- Contains all five trace elements that are essential for animal health
- Easily dissolved, so is suitable for the supplementation of dairy cows via addition to the drinking water, oral daily drenching, or addition to supplementary feed
- Contains aniseed flavouring for improved palatability
- Do not administer while dosing with zinc for facial eczema prevention



**ACTIVE INGREDIENTS:** 250mg elemental copper (as copper sulphate), 5mg elemental cobalt (as cobalt sulphate), 3mg elemental selenium (as sodium selenate), 10mg elemental iodine (as calcium iodate) and 400mg elemental zinc (as zinc sulphate monohydrate) per 5g dose

**DOSE RATE:** 5g per cow per day

**PACK SIZE:** 25kg lined polypropylene bag



## DCM™ Gold

### All organic copper

- Free-flow water-soluble multi-mineral trace element mix containing copper, cobalt, selenium, iodine and zinc
- Contains aniseed flavouring for improved palatability
- Suitable where organic copper is required or where it is desirable to avoid the use of copper sulphate
- Easily dissolved, so is suitable for the supplementation of dairy cows via addition to the drinking water, oral daily drenching, or addition to supplementary feed



**ACTIVE INGREDIENTS:** 150mg elemental copper (as copper EDTA), 10mg elemental cobalt (as cobalt sulphate), 5mg elemental selenium (as sodium selenate), 10mg elemental iodine (as EDDI) and 600mg elemental zinc (as zinc sulphate monohydrate) per 5g dose

**DOSE RATE:** 5g per cow per day

**PACK SIZE:** 25kg lined polypropylene bag



## DCM™ Zero

### No copper

- Free-flow water-soluble multi-mineral trace element mix, with cobalt, selenium, iodine and zinc
- Contains aniseed flavouring for improved palatability
- Designed to be administered during the facial eczema season or where herd copper levels are already adequate (e.g. when feeding significant amounts of PKE)
- Easily dissolved, so is suitable for the supplementation of dairy cows via addition to the drinking water, oral daily drenching, or addition to supplementary feed



**ACTIVE INGREDIENTS:** 10mg elemental cobalt (as cobalt sulphate), 3mg elemental selenium (as sodium selenate), 10mg elemental iodine (as EDDI) and 400mg elemental zinc (as zinc sulphate monohydrate) per 5g dose

**DOSE RATE:** 5g per cow per day

**PACK SIZE:** 25kg lined polypropylene bag



## Custom Mineral Blend

### Tailored to suit

- A service that provides a customised mineral blend tailor-made for an individual farm
- Ingredients can include trace elements, minerals, vitamins and many other additives that may be required (subject to compatibility)
- Product is manufactured according to farmers' individual requirements (Ravensdown can assist in determining this if required) and is delivered direct to farm within 10-15 working days in 25kg lined polypropylene bags, in half or one tonne lots
- An optional extra is the inclusion of convenient 'day packs' inside each 25kg bag that provide the whole herd's requirements for one day





# Trace elements



## Stock Selenium™

### Convenient ready to use liquid selenium supplement

- Prevention and treatment of selenium deficiency
- Use by medication of the drinking water, oral drenching (daily or strategic) or addition to supplementary feed



**ACTIVE INGREDIENT:** 0.5% (5g/L) elemental selenium (as sodium selenate) as a colourless solution

**DOSE RATE: Strategic oral drenching:** 1ml/50kg live-weight no more frequently than every 3 weeks

**Daily dosing:** 0.1ml/50kg live-weight per day; by drenching, water or feed medication

**PACK SIZES:** 20L & 200L drums



## Selprill Double®

### Up to 12 months supplementation for the whole farm with our patented prill

- A slow-release 2% selenium prill for use as a fertiliser additive to raise soil and herbage selenium levels
- Treatment and prevention of selenium deficiency in grazing animals



**ACTIVE INGREDIENT:** 2% elemental selenium

**DOSE RATE:** ½ kg per hectare per year (10g elemental selenium per hectare per year)

**PACK SIZE:** 25kg polypropylene bag

Selprill Double® is a registered trademark. NZ Patent number 534753.



## Stock Iodine™

### Convenient ready to use iodine supplement

- Prevention and treatment of iodine deficiency
- Use by addition to the drinking water, oral drenching (daily or strategic), addition to supplementary feed or foliar application (preferably with a suitable sticking agent)



**ACTIVE INGREDIENT:** 5% elemental iodine (as potassium iodide) as a colourless to light brown solution

**DOSE RATE: Strategic oral drenching:** ewes 4-5ml monthly as required.

**Daily dosing:** 0.1-0.8ml per cow per day; 1-4ml per 100 adult sheep per day;

by drenching, water or feed medication

**Foliar application:** 1.25L/ha (pasture); 2.5L/ha (brassicas) up to 1-2 weeks pre-grazing

**PACK SIZES:** 20L drums



## Stock Copper™

### Convenient ready to use copper supplement

- Prevention and treatment of copper deficiency
- Use by addition to the drinking water, oral daily drenching, addition to supplementary feed or foliar application (preferably with a suitable sticking agent)
- Do not administer to animals while dosing with zinc for facial eczema prevention



**ACTIVE INGREDIENT:** 5% elemental copper (as copper sulphate) as a clear blue solution

**DOSE RATE: Daily dosing:** 1-5ml per cow per day; 1-2ml per adult deer per day; 0.1-0.3ml per adult sheep per day; by drenching, water or feed medication

**Foliar application:** 10L/ha up to 1-2 weeks pre-grazing

**PACK SIZES:** 20L drums



## Copper Sulphate

### For fertiliser or animal health use

- Copper supplement ( $\text{CuSO}_4 \cdot 5\text{H}_2\text{O}$ ) for the prevention and treatment of copper deficiency
- Suitable for oral daily drenching, addition to the drinking water, addition to supplementary feed, foliar application (preferably with a suitable sticking agent) or application with fertiliser



**ACTIVE INGREDIENT:** 25% elemental copper

**USAGE RATES: Daily dosing:** typically 1-2g/cow/day by drenching, water or addition to feed

**Fertiliser:** 5-6kg/ha (sheep and cattle); 12kg/ha (deer); ideally in the autumn

**Foliar application:** 2kg/ha 1-2 weeks pre-grazing will give up to 6 weeks supplementation to grazing stock

**PACK SIZES:** 25kg polypropylene bag (non-branded)





## Stock Cobalt™

### Convenient ready to use cobalt supplement

- Prevention and treatment of cobalt deficiency
- Use by addition to the drinking water, oral daily drenching, addition to supplementary feed or foliar application (preferably with a suitable sticking agent)



**ACTIVE INGREDIENT:** 1% elemental cobalt (as cobalt sulphate) as a clear red solution  
**DOSE RATE:** **Daily dosing:** 1-2ml per cow per day; 1-2ml per 100 adult sheep per day; by drenching, water or feed medication  
**Foliar application:** 1.25-2.5 L/ha up to 1-2 weeks pre-grazing  
**PACK SIZES:** 20L drums



## Cobalt Sulphate

### For fertiliser or animal health use

- Cobalt supplement ( $\text{CoSO}_4 \cdot 7\text{H}_2\text{O}$ ) for the prevention and treatment of cobalt deficiency
- Suitable for foliar application (preferably with a suitable sticking agent) or application with fertiliser



**ACTIVE INGREDIENT:** 21% elemental cobalt  
**USAGE RATES:** **Fertiliser:** Capital: 350g/ha; Maintenance: 175g/ha; ideally in the spring  
**Foliar application:** 60-240g/ha 1-2 weeks pre-grazing will give up to 6 weeks supplementation to grazing stock  
**PACK SIZES:** 20kg or 25kg bag or cardboard box (non-branded)



## Zinc Sulphate Hepta

### Water soluble multi-purpose zinc

- Prevention of facial eczema
- Treatment and prevention of foot-rot and scald
- Treatment and prevention of dermatophilosis (mycotic dermatitis or lumpy wool)
- Use as a dietary zinc supplement



**ACTIVE INGREDIENT:** 22% elemental zinc (as zinc sulphate heptahydrate,  $\text{ZnSO}_4 \cdot 7\text{H}_2\text{O}$ )  
**DOSE RATE:** **Facial eczema:** 8g/100kg live-weight/day by addition to the drinking water only (do not orally drench at the facial eczema prevention dose rate)  
**Foot-bath or hoof-mat:** 10% solution (1kg into 10L water)  
**Dermatophilosis:** prevention 0.75% solution; treatment 1.5% solution; by spray or dip  
**Dietary supplement:** 1-3g per cow per day; by oral drenching in feed or water  
**PACK SIZE:** 25kg lined polypropylene bag



Registered pursuant to the ACVM Act 1997, No A9256.

## Zinc Sulphate Mono

### Water soluble multi-purpose zinc

- Prevention of facial eczema
- Treatment and prevention of foot-rot and scald
- Treatment and prevention of dermatophilosis (mycotic dermatitis or lumpy wool)
- Use as a dietary zinc supplement



**ACTIVE INGREDIENT:** 35% elemental zinc (as zinc sulphate monohydrate  $\text{ZnSO}_4 \cdot \text{H}_2\text{O}$ )  
**DOSE RATE:** **Facial eczema:** 5.5g/100kg live-weight/day by addition to the drinking water only (do not orally drench at the facial eczema prevention dose rate)  
**Foot-bath or hoof-mat:** 6.5% solution (650g into 10L water)  
**Dermatophilosis:** prevention 0.5% solution; treatment 1% solution; by spray or dip  
**Dietary supplement:** 0.5-2.0g per cow per day; by oral drenching in feed or water  
**PACK SIZE:** 25kg lined polypropylene bag



Registered pursuant to the ACVM Act 1997, No A9257.

## Zinc Oxide Plus™

### Pre-stabilised to make oral drenching easier

- Pre-stabilised zinc oxide powder ( $\text{ZnO}$ ) for the prevention of facial eczema in cattle and sheep by oral drenching or addition to supplementary feed
- Drenching can either be at long-term rates (ranging from daily to weekly) or crisis rates (daily depending on spore count)
- Can also be used as a dietary zinc supplement



**ACTIVE INGREDIENT:** 80% elemental zinc  
**DOSE RATE:** **Facial eczema:** Long-term rates: from 2.5g/100kg live-weight per day; to 11g/100kg live-weight twice weekly; to 27g/100kg live-weight per week (see label or website for more details)  
**Dietary supplement:** 0.2-1.0g per cow per day; by oral drenching or addition to feed  
**PACK SIZE:** 25kg lined polypropylene bag



Registered pursuant to the ACVM Act 1997, No A9412.



# Flavouring agent



## Sweetwater®

### Makes the water taste better

- Caramel flavouring used to mask the taste and smell of zinc, magnesium, trace elements, bloat remedies and other additives, particularly in stock drinking water but also in drench mixtures or solid feeds
- Encourages water consumption and aids in the effective administration of these additives



**ACTIVE INGREDIENTS:** Caramel flavours and sugars

**DOSE RATE:** Drinking water: 0.5-2ml per litre water or 25-50ml per kg of dissolved additive

**Solid feeds:** 1-2L per tonne of feed

**PACK SIZE:** 20L drum



# Facial eczema



## Sporeguard®

### Prevent facial eczema without zinc

- Systemic fungicide used to control the facial eczema fungus *Pithomyces chartarum*
- Should always be used with the surfactant Sporewet®
- Sporeguard® and Sporewet® are effective in keeping facial eczema spore counts on pasture below dangerous levels for up to 40 days, hence animals do not ingest harmful numbers of spores and should not require the administration of zinc



**ACTIVE INGREDIENT:** 500g/L carbendazim

**APPLICATION RATE:** 300ml/ha (with 100ml/ha Sporewet®) in 100-200L water per ha

**WITHHOLDING PERIOD:** Nil

**PACK SIZE:** 10L drum

Registered pursuant to the ACVM Act 1997, No P8308.



## Sporewet®

### Get the best from Sporeguard®

- Surfactant for use with Sporeguard® in the control of facial eczema
- Allows the water rate to be lowered to as low as 100L/ha, ensuring better coverage and quicker rain fastness



**ACTIVE INGREDIENT:** Alcohol ethoxylate surfactant

**APPLICATION RATE:** 100ml/ha (with 300ml/ha Sporeguard®) in 100-200L water per ha

**WITHHOLDING PERIOD:** Nil

**PACK SIZE:** 5L container





## Lift® B<sub>12</sub> Plain

### Injectable B<sub>12</sub> in a pillowpack

- Double strength, injectable vitamin B<sub>12</sub> for the treatment and prevention of cobalt deficiency and vitamin B<sub>12</sub>-responsive conditions
- Each treatment lasts 4-6 weeks



**ACTIVE INGREDIENT:** 2g/L vitamin B<sub>12</sub> (hydroxocobalamin)

**DOSE RATE:** 2-6ml (See label for more detail)

**WITHHOLDING PERIODS:**

**Meat:** Nil; **Milk:** Nil

**PACK SIZE:** 500ml injection pack

Registered pursuant to the ACVM Act 1997, No A9783.



## Lift® B<sub>12</sub> Selenised

### Injectable B<sub>12</sub> and selenium in a pillowpack

- Double strength, injectable vitamin B<sub>12</sub> with selenium, for the treatment and prevention of cobalt deficiency, vitamin B<sub>12</sub>-responsive and selenium-responsive conditions
- Each treatment lasts 4-6 weeks



**ACTIVE INGREDIENTS:** 2g/L vitamin B<sub>12</sub> (hydroxocobalamin) plus 4mg/ml selenium (as sodium selenate)

**DOSE RATE:** 2-6ml (See label for more detail)

**WITHHOLDING PERIODS:**

**Meat:** Nil; **Milk:** Nil

**PACK SIZE:** 500ml injection pack

Registered pursuant to the ACVM Act 1997, No A9784.



## Vita-Mineral®

### An extra boost with iodine, selenium and vitamins

- Stable, water-soluble multi-mineral and vitamin powder for supplementation of sheep and cattle by oral drenching at strategic times (e.g. prior to mating, late pregnancy or during periods of stress)
- The drench solution is made by dissolving 1kg powder (1 sachet) in water to make up to 5 litres solution



**ACTIVE INGREDIENTS:** Each 10ml dose contains 280mg iodine, 2mg selenium, 2.5mg cobalt, 6mg zinc, 20,000 IU vitamin A, 10,000 IU vitamin D and 200 IU vitamin E.

**DOSE RATE:** 50ml drench solution (10 grams powder) per adult cattle

**WITHHOLDING PERIODS:**

**Meat:** Nil; **Milk:** Nil

**PACK SIZE:** 4kg polyethylene bucket (containing 4 x 1kg sachets)





# Sheep and beef health planner

STOCK CLASS				
AUG				
SEP				
OCT				
NOV				
DEC				
JAN				
FEB				
MAR				
APR				
MAY				
JUN				
JUL				



0800 100 123  
[ravensdown.co.nz](http://ravensdown.co.nz)

V0720 Edition